



# CALIFORNIA'S LEADING SPECIALTY CONTRACTOR



LARGE SCENIC  
WINDOWS & DOORS



BUILDING  
ENVELOPES



ENGINEERING

[WWW.PRECISIONBUILDUSA.COM](http://WWW.PRECISIONBUILDUSA.COM)



## ABOUT OUR COMPANY

Precision Building Solutions is an employee-owned business with more than 40 years of building and engineering experience in the Golden State; our expertise spans large window and door installations for commercial, single-family and multi-family projects. As a certified C17 glazing contractor (License #1066540), we ensure high quality solutions geared toward your specific needs.

We are committed to tackling the toughest, most challenging building envelopes and openings from design to engineering to installation. We are a complete project partner providing greater control over project quality, timelines, and communication.

**PROVIDING  
SOLUTIONS FOR  
40 YEARS**







## OUR PASSION

We are committed to your success.

Our passion is simple, recruit industry experts, support them with the best tools, and deliver the best partnership for our customers on their projects.

At our core, we are product experts with a passion for doing the job right. We don't cut corners, and every team member is dedicated to complete project success.



***We are craftsman, dedicated to the trade of doing the job right the first time to avoid issues, callbacks, and project delays. We bring our vast expertise to every project.***

# PROJECT SERVICES & SOLUTIONS



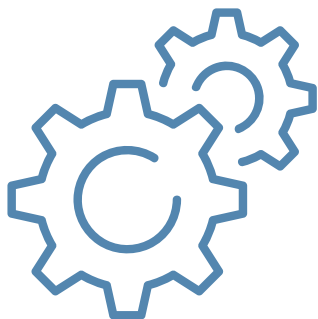
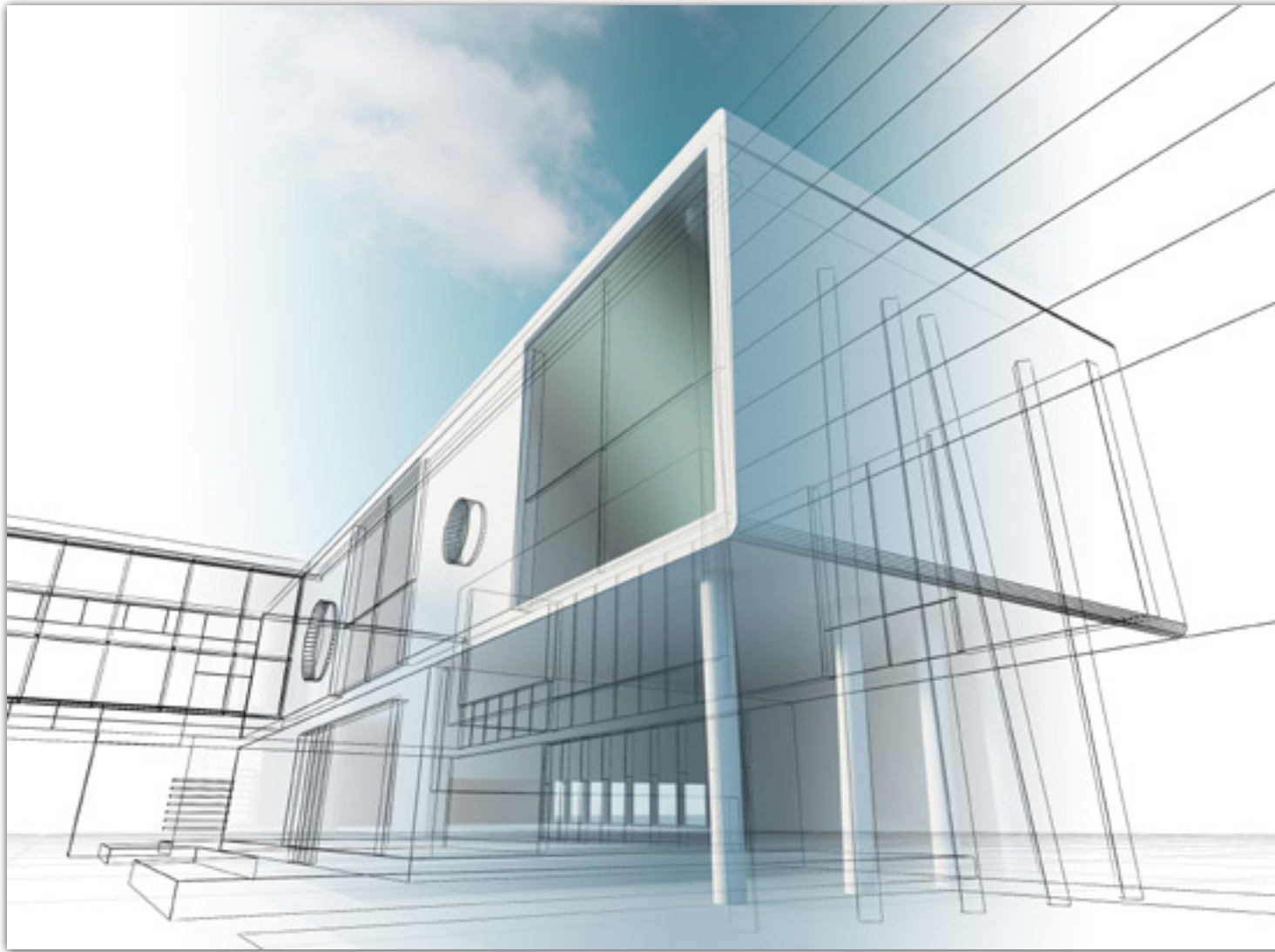
## INSTALLATION

- Expert Window & Door Installation in luxury homes and in the commercial market (multi-family, hospitality, historical, education)
- Site Management
- Field Verification
- Detailing
- Bid Management
- Quality Control
- Water management design
- Code Review





***Over 40 years of luxury home and commercial window & door installation experience. One firm combining engineering & installation services.***



## **ENGINEERING**

- Structural Design
- Value Engineering
- Feasibility Studies
- Structural Analysis
- Construction Documents
- Seismic Evaluation
- Building Information Modeling (BIM)
- Quality Assurance Reviews
- Construction Support

# DIVERSE PROJECT AND PRODUCT EXPERIENCE



ASSISTED LIVING



MULTI-FAMILY



*These guys are great to work with. Their drawings are really clear and they pay attention to detail. I would highly recommend this company.*

*– Keane Construction*



CUSTOM HOMES



HOSPITALITY, EDUCATION,  
RELIGIOUS





## ASSISTED LIVING FACILITY

This project was a complete remodel of a 1960's vintage, cast in place, structure that presented several unique challenges.

**Architect:** Smith Group

**Builder:** Quiring General

**Products Used:** Graham Architectural Products, Marvin Signature Collection, Western, Brand X Metals, Dow Sealants

**Product Types:** ADA Sliding Doors, Sliding Windows, Clad Wood Commercial Doors



# FEATURED PROJECTS



## EL CAMINO CONDOS

The developer was challenged working with a product line to support the structural alignment and design of this 10,000+ sq ft. mixed use retail/commercial space with 32 residential condominiums above and underground parking. Marvin was the perfect solution as it provided solutions that met the needs for the project with size, color, options and sustainability.

In spaces such as these, it is important to maintain a balance between the retail environment as well as those who live there. One goal was to harness the natural light for the retail spaces and 32 condominiums while maintaining an overall design that was contemporary and yet appealing to the neighborhood.







**Installation:** Precision Building Solutions - Installation

**Engineering:** Precision Building Solutions - Engineering

**Builder:** Giffin and Crane



## COASTAL RESIDENCE

The owner of a stunning coastal residence has made a fantastic choice by using Schueco, a cutting-edge German brand with exceptional performance ratings and all-aluminum construction, and Panoramah, the Swiss marvel-known for its minimal sight lines and impressive large-scale dimensions. With these two leading brands on board, this home is sure to exude an air of luxury and sophistication.

The owner of a challenging project enlisted the expertise of Precision Building Solutions for the installation of complex window systems and their secure attachment to steel I-beams. Precision's installation experts collaborated closely with their engineering team, resulting in innovative solutions including custom-designed stainless steel brackets, high-quality screws sourced from Europe, and one-of-a-kind gaskets and nylon bushings. These advancements not only ensured windows' durability but also provided protection against corrosion in salty environments.

The incredible skill and expertise of Precision Building Solutions engineers as they used hand sketches to create the perfect design for mounting a Panoramah "pulley system" onto a towering steel structure. The task was monumental, as the Triple Hung window they were working on stood at an impressive 26 feet tall!

Adding to the challenge, many instructions couldn't be provided on-site, so installation field personnel had to work closely with Precision Building Solutions Engineers to ensure the units were assembled flawlessly. But the wizards at Precision Building Solutions didn't just stop there. They went the extra mile by conducting a series of impactful sealant bead tests, aptly known as "pull testing."

These tests showcase the art of ensuring the sealant's adhesion to various adjacent surfaces, such as aluminum, stainless steel, or zinc I-beams, remains steadfast in the face of the elements. Precision Building Solutions left no stone unturned and even experimented with a clever combination of DOW sealants prior to finalizing their masterful application. Truly, a fascinating display of teamwork, precision, and innovation all rolled into one!

# FEATURED PROJECT



**Architect:** Blackbird Architects

**Builder:** Penta Building Group

## THACHER SCHOOL

Creative solutions were developed by the Precision Build Solutions team to blend the Marvin Modern and Ultimate product, as well as to tie in the product to existing trim and siding design on this 23,000 sq. ft LEED Gold project.

- Supplied & installed Marvin Modern and Marvin Ultimate Signature Windows & Doors
- Site fabricated custom sill pans and liquid flashing
- Counter flashed all fenestration for high performing water-resistant barriers
- Fine-tuned all fenestration components for optimal operation



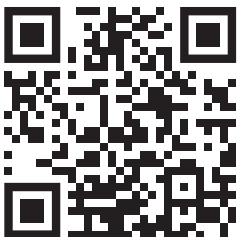


# PRODUCT EXPERTISE

We answer any simple to complex window and door installation question. No matter the complexity of the project, we have the experience to get the job done right the first time. Precision Building Solutions brings the highest standards to the project.

- Our master installers are certified and licensed – #1066540
- OSHA 10 hour foreman safety trained
- Class VII lift certification
- Boom & scissor lift certifications
- Company owned and maintained specialized lifting and hoisting equipment





**PRECISION BUILDING SOLUTIONS  
INSTALLATION**

**Northern California**  
(800) 545-2430

**Southern California**  
(800) 545-2430

**PRECISION BUILDING SOLUTIONS  
ENGINEERING**

**California**  
(209) 227-7646

**C17 GLAZING CONTRACTOR LICENSE #1066540**